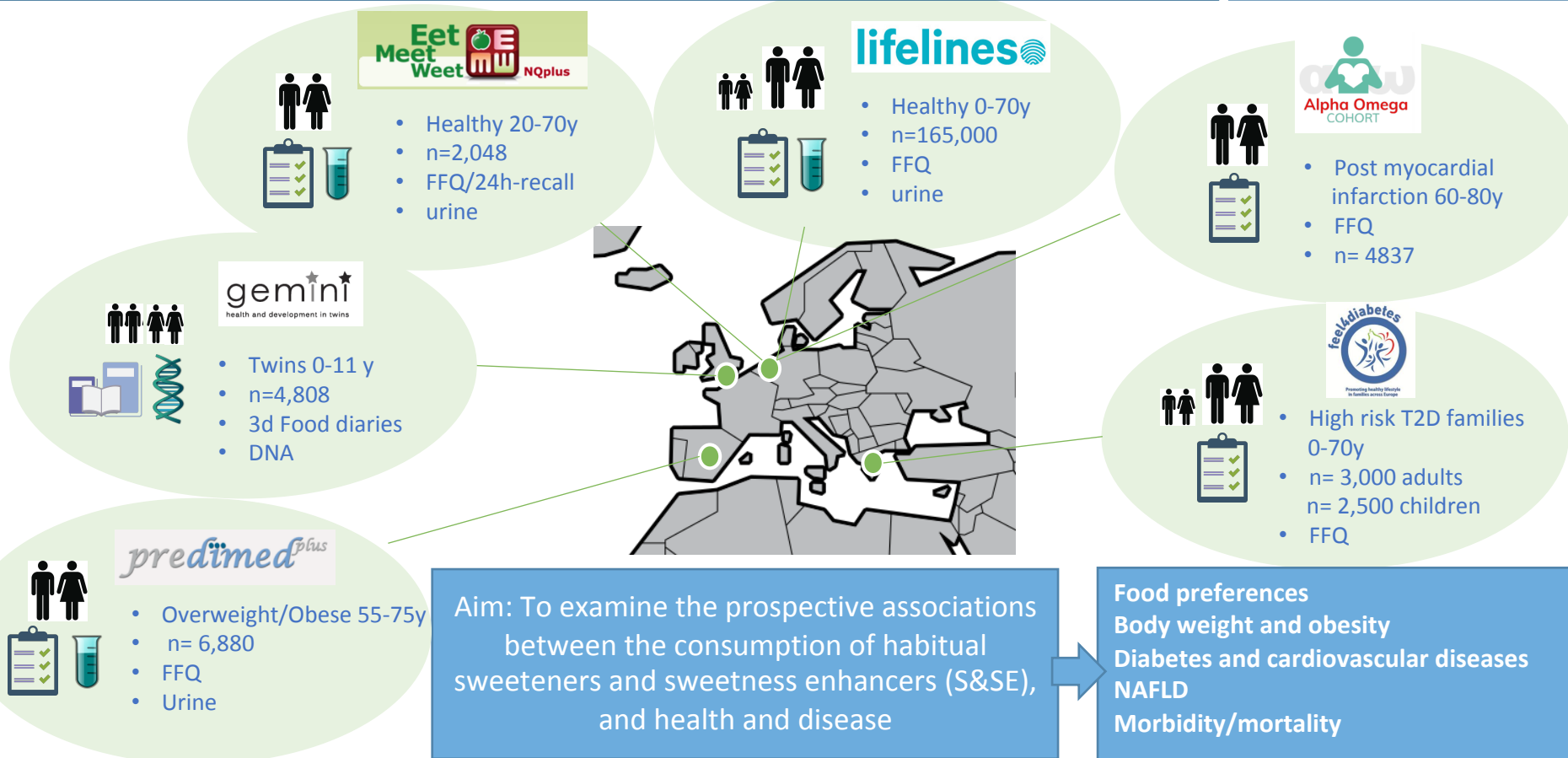


WP4. Population-based studies on sugar, sweeteners and health (lead: WU)

SWEET



WP4. Population-based studies on sugar, sweeteners and health (lead: WU)

MAIN TASKS summary



- 4.1 Data harmonization of the six prospective cohort studies
- 4.2 Method development for the urinary biomarker analyses
- 4.3 Epidemiological analyses on S&SE and health
- 4.4 Establish the importance of genetic and environmental influences
on early growth and eating behavior in children
- 4.5 Establish the association between S&SE and food preferences
- 4.6 Evaluation of the replacement of sugar by S&SE (substitution modelling)
- 4.7 Inventory European consumed S&SE foods

